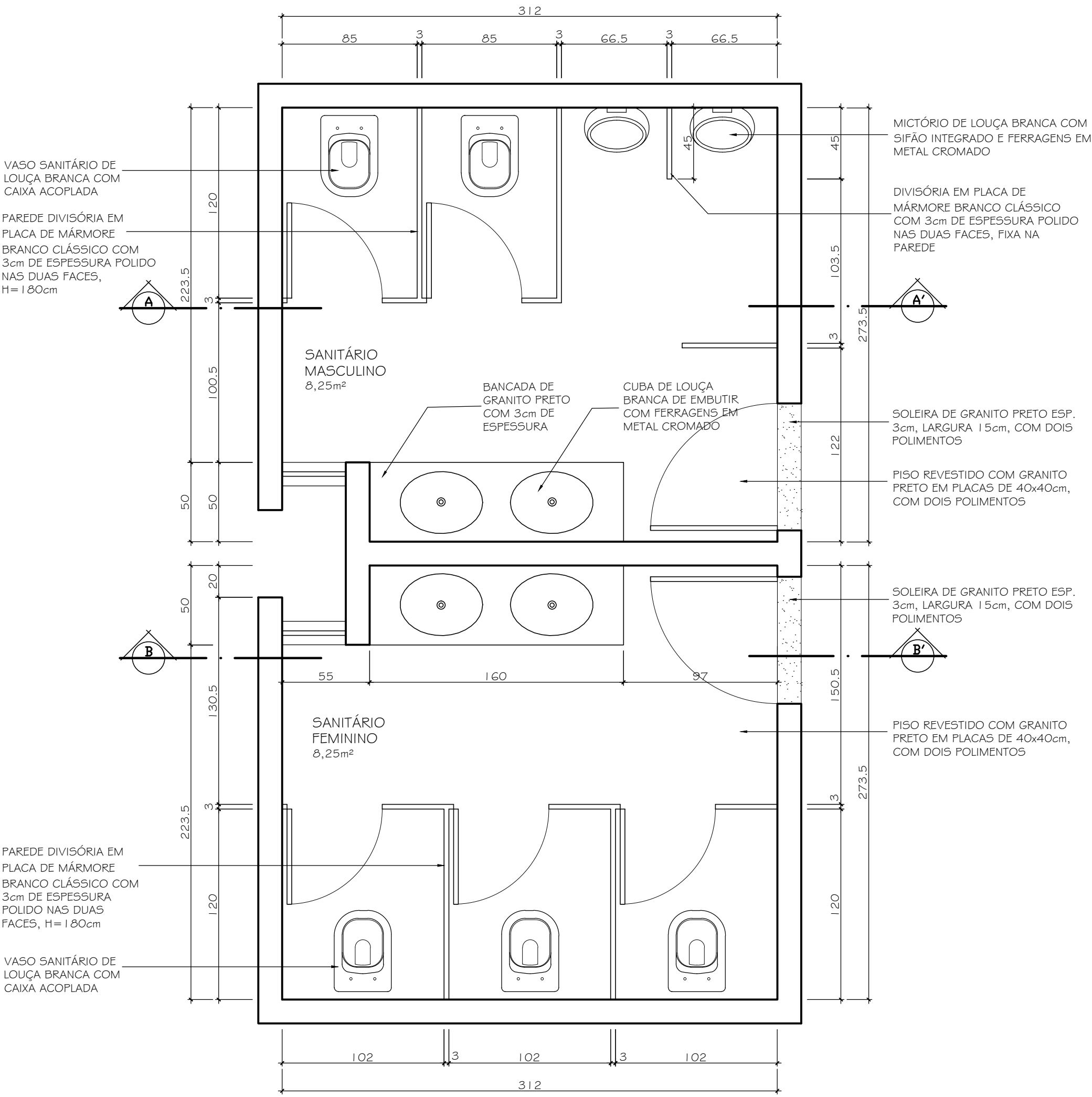
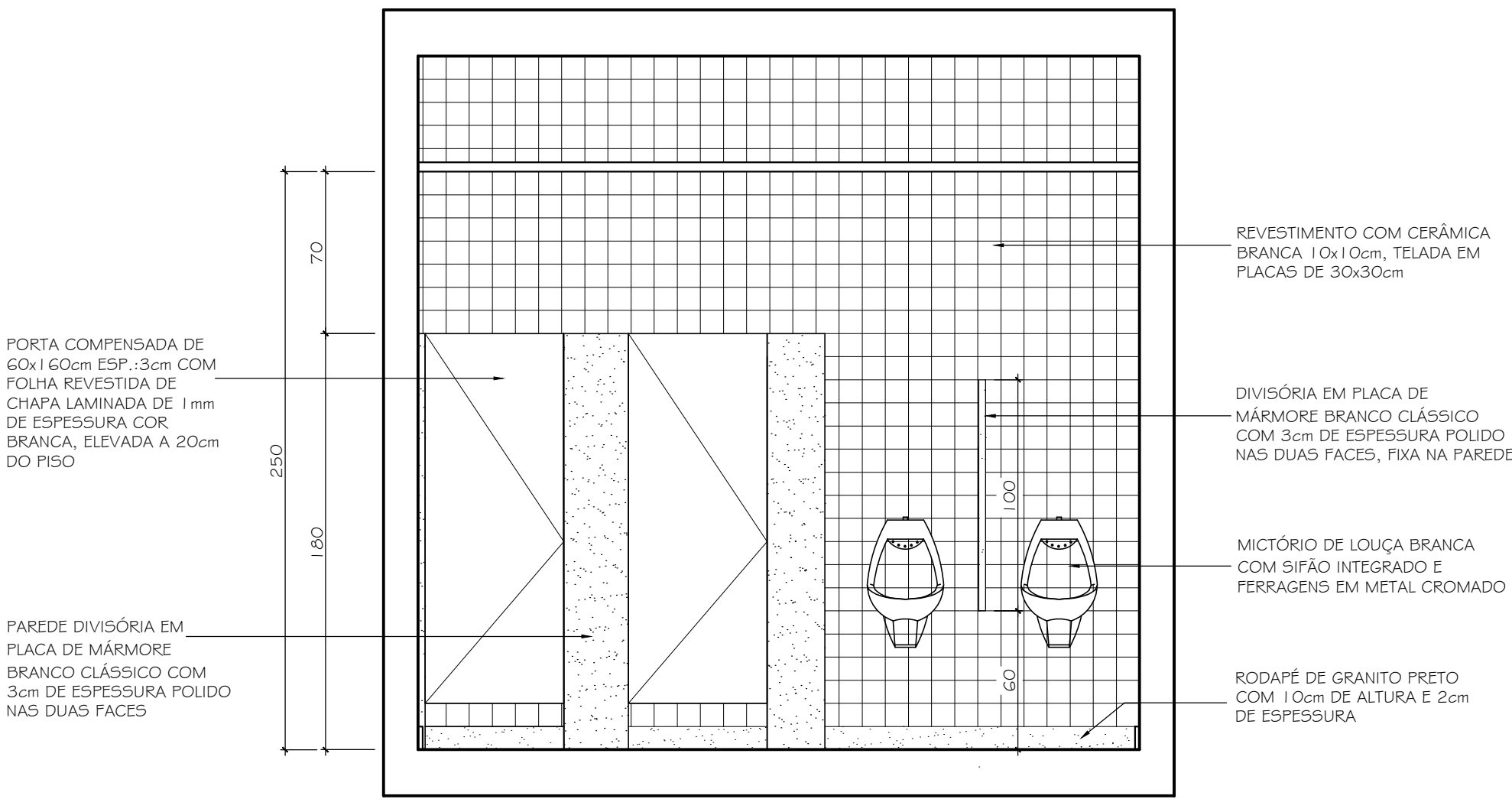


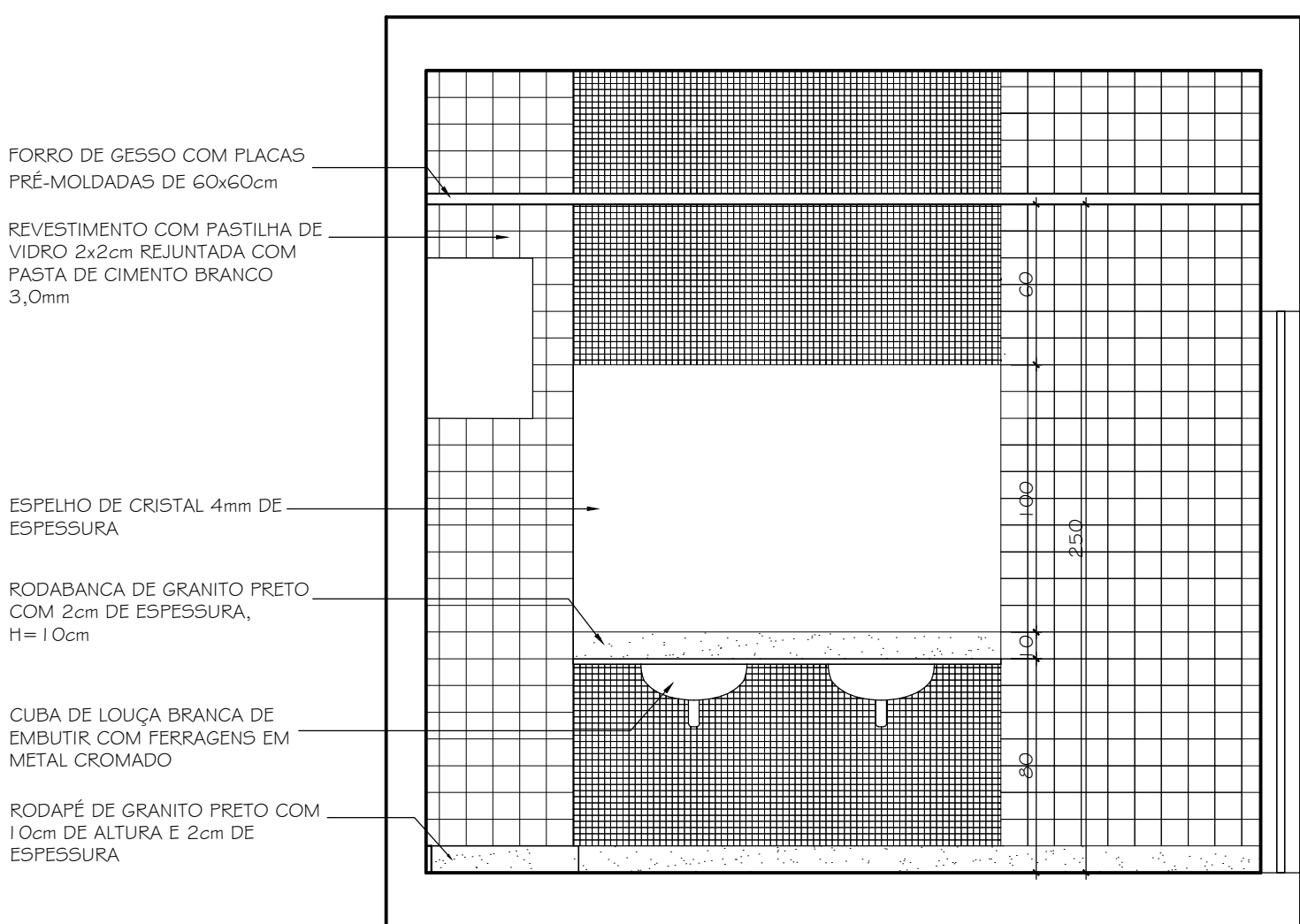
DETALHE 1 - SANITÁRIOS MASCULINO E FEMININO



PLANTA BAIXA - SANIT. MASC. / FEM.
ESCALA 1:25

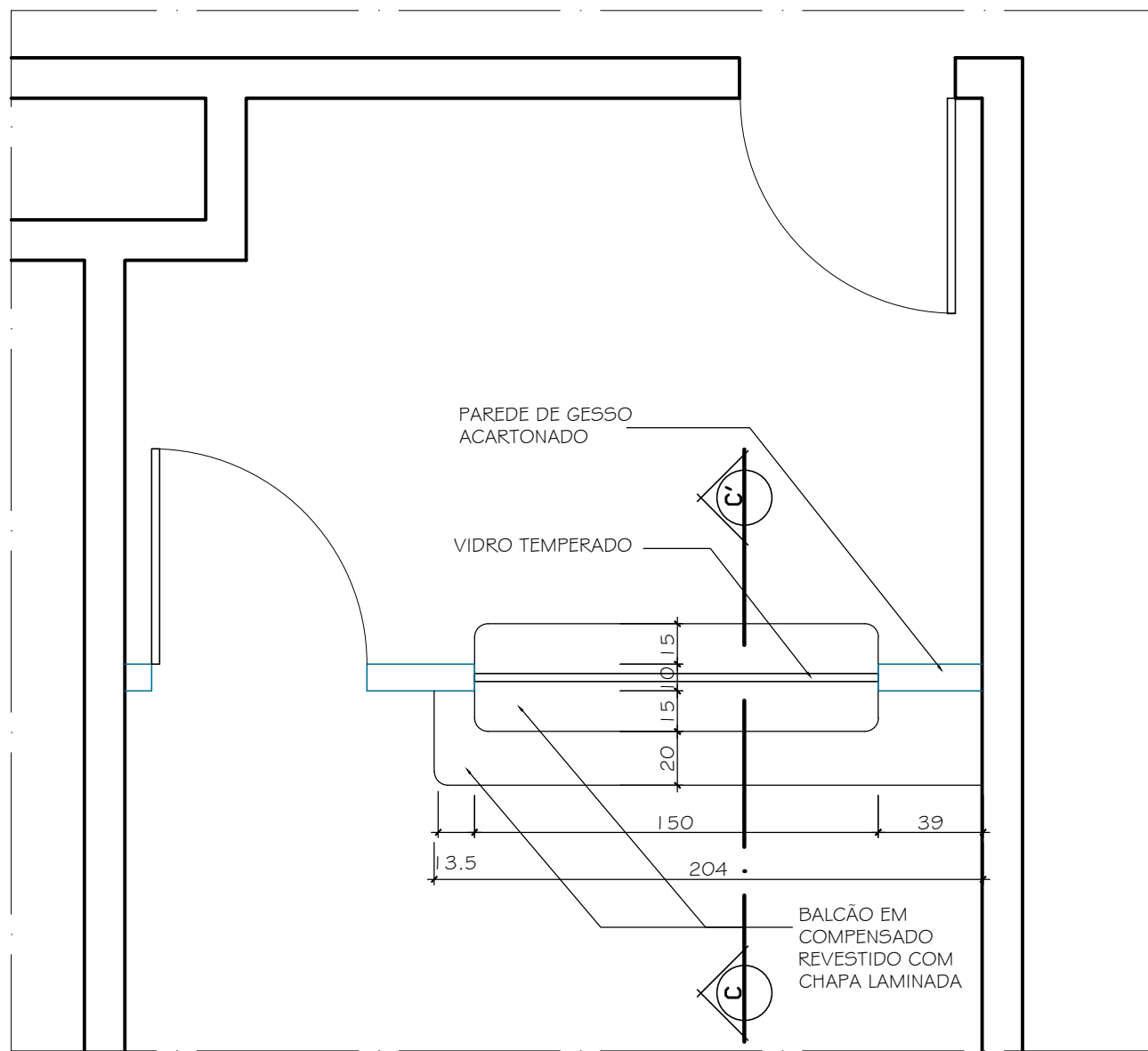


CORTE A-A' - SANIT. MASC. / FEM.
ESCALA 1:25

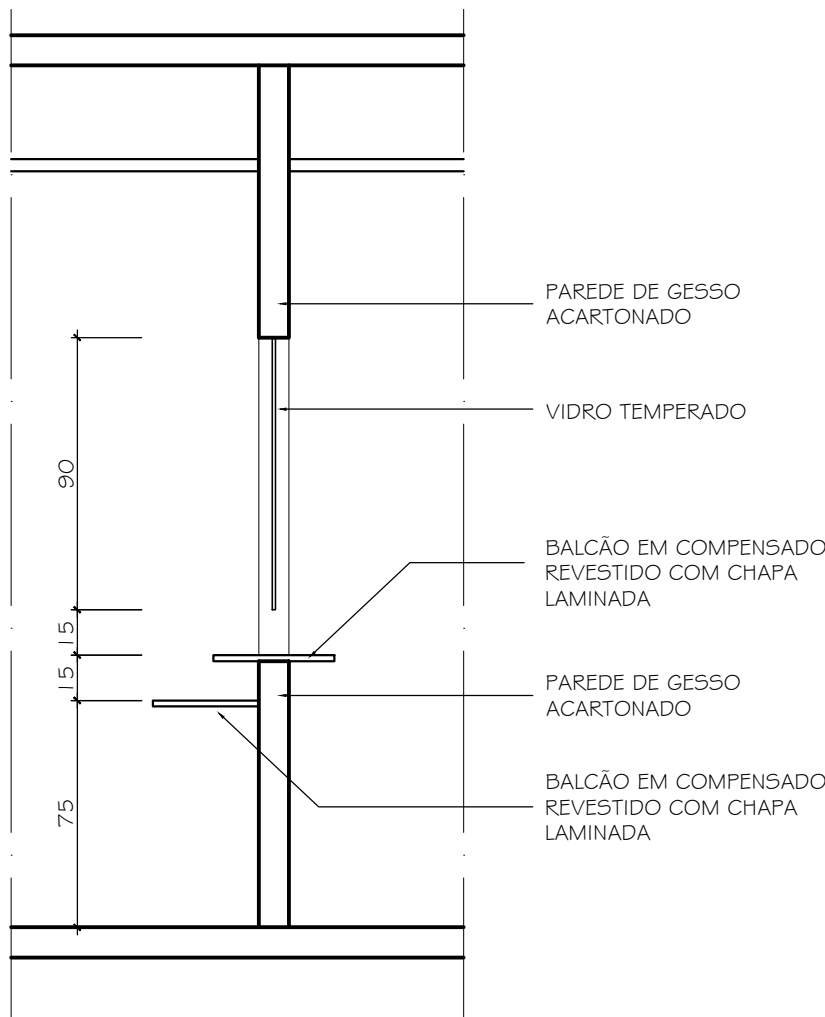


CORTE B-B' - SANIT. MASC. / FEM.
ESCALA 1:25

DETALHE 2 - GUICHÊ DE ATENDIMENTO



PLANTA BAIXA - GUICHÊ ATEND.
ESCALA 1:25



CORTE C-C' - GUICHÊ ATEND.
ESCALA 1:25